

WESTERN AUSTRALIAN HORSE TREKKERS CLUB INC.



Website: www.watrekkers.info/

Email: wahtc@iinet.net.au

ABN 77 820 635 660



COMING EVENTS

September 23rd-25th

Bowelling

October 7th

Dwellingup

October 21st & 22nd

Pickering Brook

November 11th & 12th

Capel

November 25th

AGM

TBA

Trekkers Tribune September 2017

OUR CLUB

Hi Trekkers,

Hope your all enjoying the warmer and a bit drier weather.

I have just returned from Dowerin fields Days. This year it was good to watch the demos, shop and chat to other horsey people. Caught up with quite a few trekkers. Last year we successfully promoted our club and ATHRA at the field days.

Myalup ride went well for all I hear and the weather was good. Many thanks to Margaret Rose and Irene Taaffe for being the ride coordinators. Margaret didn't ride for a few reason but still coordinated and was support for the ride. Margaret really does contribute to this club hugely. Helen Rawlins has kindly done a report for the newsletter.

The ride notes for Bowelling and Dwellingup rides will be sent with this newsletter. These rides are open to enter on Nominate. Also I am sending out again instructions for Nominate which Margaret Rose has spent a lot of time compiling. Please print off and read when doing your entry.

Thanks to Margaret Rose for being the ride coordinator for Bowelling.

Noelene Scoot is the Ride Coordinator for the Dwellingup Ride. Many thanks Noelene.

For all rides please thoroughly read the ride notes. There is important information in the ride notes which the Ride Coordinators have gone to a lot of effort to produce.

Water Tank sold by tender The successful tender was made by Irene Taaffe.

AGM 2017 Save the Date 25th of November

This year we will just be having a meeting and social get together (no ride). To help get good numbers we are planning a venue close to most members. Just making enquiries at the Jarrahdale Tavern, if this is not suitable it will be at a similar venue on the outskirts of Perth. The club will provide a meal to all members.

2018

Thanks to Debbie Dowden for offering to host Trekkers at Challa Station in 2018. The club has enjoyed this trek previously. I have included some photos to wet your taste buds for riding at Challa.

With only 3 months left for this year we should start planning our calendar for next year. I will send an expression of interest form and copy of the ATHRA Trail Ride Organization Plan document. Please start considering hosting or coordinating a ride for the 2018 calendar. Email the form to wahtc@iinet.net.au

Please Note Important changes in WA Horse Trekkers Club:

To join Western Australian Horse Trekkers club go to www.athra.com.au and click on membership.

This includes Day Membership. See Membership section in this newsletter.

To enter a Western Australian Horse Trekkers ride or trek go to www.nominate.com.au and click on Equestrian.

Associations Incorporation Act 2015

It is a requirement for each new member of the association to be given a copy of the rules when they join.

Sent with this newsletter is a copy of the WAHTC Rules and Constitution.

Myalup Ride by Helen Rawlins

After leaving Perth and heading south the sunny morning rapidly transformed into ominously grey skies threatening with rain. Weather reports also predicted “a high chance of rain” over the weekend. Despite the foreboding threat of a wet weekend and a night of rain on Friday, the sun came out on cue on Saturday and the weather turned out to be perfect for riding.

The route clearly marked with pink and red ribbons wove in and out of the pine forrest, along long sandy stretches and occasional limestone tracks ...Great for the odd canter for those who felt the urge.

The trekkers spread out along the track with the OTTs up the front (in racing mode for the first few kms) with the Lead rider. Janes’ horse Fluffy in his exuberance with being out doing what he loves to do displayed his ariel skills and Jane her riding skills. Margo and her horse were also doing likewise further back in the group and the little

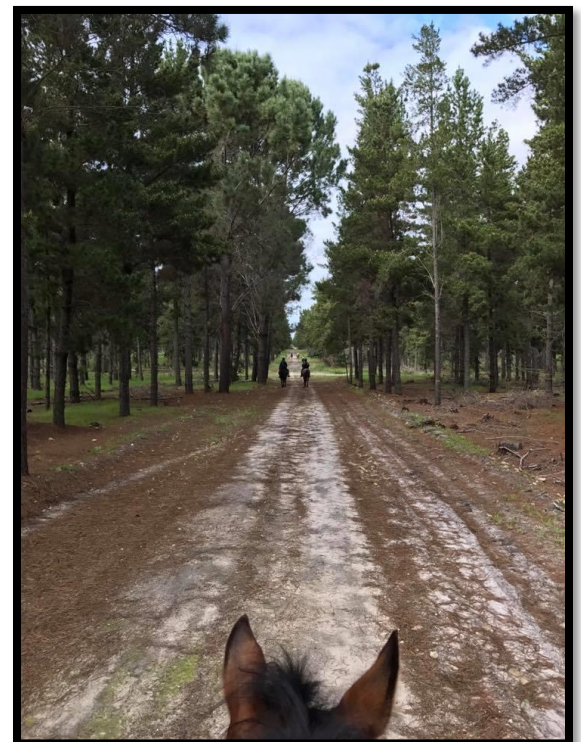


3 year old filly on her first trek took it all in her stride. It didn't take long for horses and riders to find their rhythm and travelled at a pace of comfort for them.

The landscape changed as we rode up a hill to find spectacular views into the distance but also the charred remains of pine forests that had been victims of the recent devastating Yarloop fires. The Sunday ride took us

alongside farmland, along a bank beside an old railway line and over a potentially very scary bridge lined on either side with flapping flags. Our brave horses performed admirably by walking single file over the bridge and although cautious none actually “lost it” and we all got across safely.

The ride officials maintained regular contact with each other to check that all was well at each end of the trail and happily reported no major incidents. Margaret Rose provided great support by positioning her vehicle at strategic points to make sure we all went in the right direction and then met us half way with lunch for riders and horses and a very welcome hot cup of tea.



After feeding and rugging our ponies, the evenings were spent by the warmth of the fire in the cottage hired for the weekend, where stories (large and small) were shared over coffee and chocolate and the odd glass of wine.... or two.

A Big Thanks !!! to Margaret Rose and all who put all their time into organizing and coordinating such an enjoyable weekend ride ! Thanks also to the riders for their company and stories and look forward to seeing you all on the next ride.



ATHRA

One of the many benefits of being an ATHRA member are the discounts available. ATHRA members can purchase the Rescue Swag for \$120 including post. A saving of \$29!

The Rescue Swag not only includes medical supplies, but links directly to instructions and photographs within the Rescue Swag app to guide you during emergencies.

An order form will be sent with this newsletter

RESCUE SWAG
First Aid in a Swag!

ATHRA SAFETY PARTNER 2016
As seen on **SHARK TANK AUSTRALIA**

FIRST AID | SLING | SPLINT | IMMOBILISATION | APP

As Seen on 4X4 Adventures! COMPLIMENTARY APP

www.rescueswag.com.au



MEMBERSHIP

Memberships for 2017. The fees are unchanged from 2016

Adults – \$110.00,

Juniors – \$50.00,

Social – \$30.00,

Over 80's – \$60.00

Membership includes ATHRA insurance \$100, members can ride with all ATHRA Clubs in Western Australia and only pay the ride fee

The ATHRA online payment system has started

To join Western Australian Horse Trekkers Club Please go to <http://www.athra.com.au/> go to Membership



To become a Day Rider you must:

- Fill out the Day membership online form and pay Day membership to ATHRA
- A Day Member registration certificate will be emailed to the Day Member once the application process is completed and the fee paid.
- In order to participate as a Day Member an individual must produce their Day Member registration certificate to the club and sign the Ride Attendance Register and have a ATHRA member sponsor
- Go to Nominate and pay the Ride fee for which you are entering. Two day membership are allowed per year.
- Should a Day Member apply for full ATHRA membership within seven (7) days of the date on the Day Member registration certificate, their full ATHRA membership fee shall be discounted by the amount of the Day Member fee paid.

Day Member Sponsors

A Day Member is sponsored and accompanied at all times on the ride by the sponsor, who must be an ATHRA member. The sponsor must make the Day Member aware of ATHRA's current Ride Rules and the other requirements of this Code of Conduct, and may only sponsor one rider per ride. The sponsor's participation in this procedure is an acknowledgement of responsibility for the conduct of the Day Member.

ATHRA THE AUSTRALIAN TRAIL HORSE RIDERS ASSOCIATION

Home About Clubs Events Insurance Biosecurity Accreditation Access ATHRA Shop Forms & Info Membership

Club Executive Login

Home >> Membership >> Day Membership

DAY MEMBERSHIP

IF YOU ARE AN EXISTING DAY MEMBER FOR THIS YEAR [CLICK HERE](#)

NOTE: A DAY MEMBER IS ENTITLED TO PURCHASE A MAXIMUM OF TWO (2) DAY MEMBERSHIPS PER CALENDAR YEAR.

*THE COST OF THE DAY MEMBERSHIP REGISTRATION CAN BE CREDITED TOWARDS A FULL ATHRA MEMBERSHIP IF THE FULL ATHRA MEMBERSHIP IS PAID FOR WITHIN SEVEN (7) DAYS OF THE DATE OF YOUR DAY MEMBERSHIP.

*DOES NOT APPLY TO SOCIAL MEMBERSHIP.

*IMPORTANT! DAY MEMBERS MUST CONTACT THE ATHRA CLUB THEY CHOSE TO RIDE WITH PRIOR TO REGISTERING AS A DAY MEMBER.

First Name *

Last Name *

BLAST FROM THE PAST

Challa 2011





WA HORSE COUNCIL ANNUAL GENERAL MEETING - THURSDAY 14TH SEPTEMBER 2017
AT THE BUNKHOUSE, BROOKLEIGH ESTATE 1235 GREAT NORTHERN HWY

As usual the format will include three Guest Presenters, door prizes, free wine and cheese tasting from 6pm. The AGM will start at 7.15pm and close at 7.45pm.

Presenters will be:

1. Megan Richards - the Grants and Services Manager from the Shire of Bridgetown-Greenbushes. Megan will be talking about the planning and implementation of the **300km Warren Blackwood Stock Route**, with planned campsites every 30 to 40km. The trail is based on the historic stock droving of the original farming families of the South West.
2. Cliff Simpson - **Road Safety Advisor** from (Wheatbelt North) WA Local Government Association. Cliff works with 24 local Government and communities to promote road safety and he will be clarifying rules for horses being ridden on the road. Interesting that in WA horses are classified as vehicles, not sure if anyone has been charged with drink riding.....Cliff is also the President of the Avon Valley Arts Society Inc.
3. Graham McAlpine - previously a horticulture technical officer with the WA Department of Agriculture and currently the Regional Landcare Facilitator within the Perth NRM National Landcare program, which assists land managers to improve their management skills. A brief overview of the capacity building activities the Perth NRM Sustainable Communities group do, will be given. Following will be information on how to apply for the most likely **Grants that are available for various equestrian activities**, the times that Grants are available and how to apply for Grants applications.

Questions from the floor are invited for any of the three presentations.

Keep up to date with the Council's developments by tuning in to **'Talking Horses' 91.3 Sport FM, or 'Horse Hotline' 88.5FM, or check out the WA Horse Council's Facebook.**

The Council would like to invite you to attend and feel free to bring any information about your sport, breed or organization and meet like-minded people.

For catering and chairs, please accept by emailing diane@horsehotline.org

For Sale

Syd Hill Swinging Fender Synthetic Stock Saddle

Approx. 2 years old

17 inch

Fully Adjustable (currently has a red gullet in) some wear and tear marks under fender as pictured.

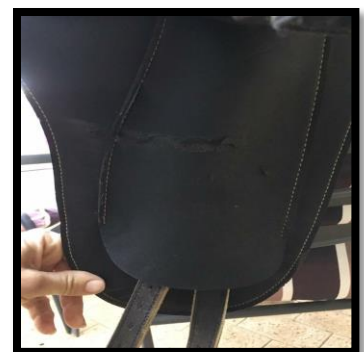
Comes with seat cover

\$900 ono

Loren McLean

loren.mclean@bigpond.com

0429 994 599



Events

Ride Calender 2017

JANUARY	Australia Day is not a long weekend this year, so no event	
FEBRUARY	Sat 11th – Sun 12th February	Trail Ride Training and Trail Challenge Two Days held in Darling Downs.
MARCH	Labour Day Weekend – Sat 4th March to Monday 6th March	Donnybrook
	Friday 17th March	Day Ride – TBA Outer Metro
APRIL	Saturday 1st April	Day Ride – TBA Outer Metro
	Fri 14th – Mon 17th April	Easter in Serpentine and Jarrahdale
	Friday 28th April	Day Ride – TBA Outer Metro Postponed
MAY	Sun 7th May – Sat 20th	Annual Trek – Clover Leaf
		Bremer Bay/Albany/Manjimup
JUNE	WA Day Weekend – Sat 3rd June - Mon 5th June	Lewana near Balingup
JULY	Saturday 8th July	Day Ride – Baldivis Equestrian Playground
	Accreditation Weekend Sat 15th – Sun 16th July	Pickering Brook
AUGUST	Sat 19th – Sun 20th August	Myalup
SEPTEMBER	Friday 8th September	Day Ride – TBA Outer Metro Cancelled
	Sat 23rd – Mon 25th September	Bowellling
OCTOBER	Saturday 7th October	Dwellingup
	Sat 21 – Sun 22 October	Pickering Brook
NOVEMBER	Sat 11th – Sun 12th November	Capel
	Saturday 25th November	AGM TBA
DECEMBER	No Ride	No Ride

Complete details of treks will be posted on website and distributed to members by email.

Trek dates and venues may change due to unforeseen circumstances. Please check current details and newsletters for up and coming rides



**ATHRA THE AUSTRALIAN
TRAIL HORSE RIDERS ASSOCIATION**